



Product Overview

NCV4264-2C: Linear Voltage Regulator, LDO, Low Iq, 100 mA

For complete documentation, see the data sheet

Product Description

The NCV4264-2C is a low quiescent current consumption LDO regulator. Its output stage supplies 100 mA with +/-2.0 % output voltage accuracy. Maximum dropout voltage is 500 mV at 100 mA load current. It is internally protected against 45 V input transients, input supply reversal, output overcurrent faults, and excess die temperature. No external components are required to enable these features.

Features	Benefits
<ul style="list-style-type: none">Maximum 60 μA Quiescent Current with 100 μA LoadVery Low Dropout 500 mV (max) at 100 mA Load CurrentFault Protections:<ul style="list-style-type: none">-42 V Reverse Voltage ProtectionShort Circuit/Overcurrent ProtectionThermal Overload Protection5.0 V and 3.3 V Fixed Output Voltage with 2% Output Voltage Accuracy, Over Full Temperature RangeAEC-Q100 Qualified	<ul style="list-style-type: none">Save battery life when in standby mode.Can operate during cranking at low input voltage.No external components required to enable protections required within any automotive applications.

Applications	End Products
<ul style="list-style-type: none">Engine Control ModuleBody and ChassisPowertrain	<ul style="list-style-type: none">Automotive

Part Electrical Specifications

Product	Compliance	Status	Output	Polarity	V _O (V)	I _O Typ (A)	V _I Max (V)	V _{DO} Typ (V)	I _q Typ (mA)	PSRR (dB)	Noise (μ V _{rms})	Package Type
NCV4264-2CST33T3G	AEC Qualified PPAP Capable Pb-free Halide free	Active	Single	Positive	3.3	0.1	45		0.033	67		SOT-223-4 / TO-261-4
NCV4264-2CST50T3G	AEC Qualified PPAP Capable Pb-free Halide free	Active	Single	Positive	5	0.1	45	0.27	0.033	67		SOT-223-4 / TO-261-4

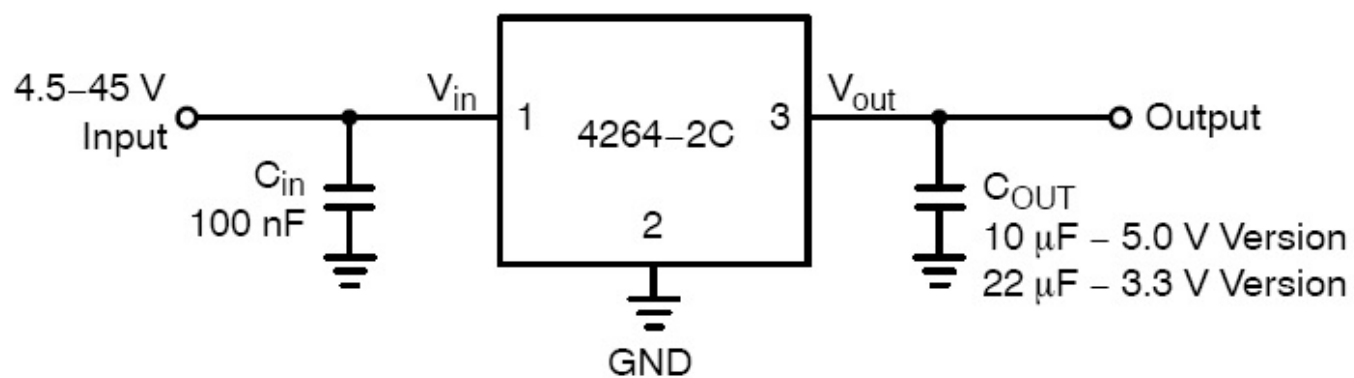


Figure 2. Applications Circuit

For more information please contact your local sales support at www.onsemi.com

Created on: 7/11/2015