

Product Overview

NCV4264: Linear Voltage Regulator, LDO, 100 mA

For complete documentation, see the data sheet

Product Description

The NCV4264 is a wide input range, precision fixed output, low dropout integrated voltage regulator, with a full load current rating of 100 mA. The output voltage is accurate within $\pm 2.0\%$, and maximum dropout voltage is 500 mV at 100 mA load current. It is internally protected against 45 V input transients, input supply reversal, output overcurrent faults, and excess die temperature. No external components are required to enable these features.

Features

- 5.0 V and 3.3 V Fixed Output Voltage and 2.0% Output Voltage Accuracy
- Very Low Dropout
- Protection:
 - 42 V Reverse Voltage Protection
 - Short Circuit Protection
 - Thermal Overload Protection
- AEC-Q100 Qualified

Benefits

- Tight regulation limits
- Can operate during cranking at low input voltage.
- No external components required to enable protections required within any automotive applications.
- Meet automotive qualification standard

Applications

- Body and Chassis
- Powertrain
- Engine Control Module

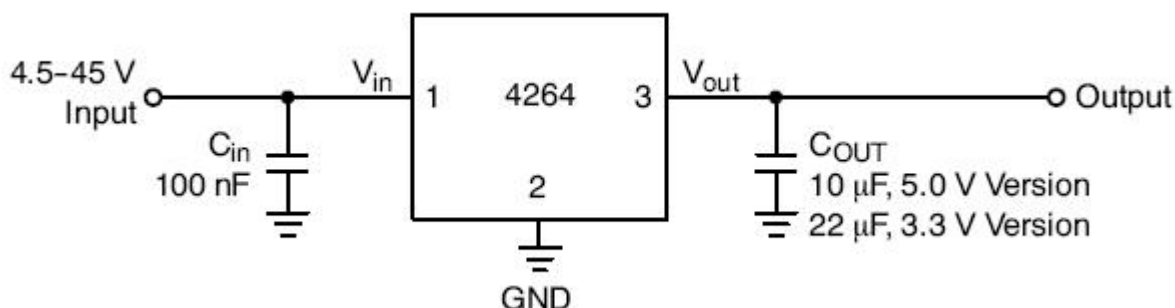
End Products

- Automotive

Part Electrical Specifications

Product	Compliance	Status	Output	Polarity	V_O (V)	I_O Typ (A)	V_I Max (V)	V_{DO} Typ (V)	I_q Typ (mA)	PSRR (dB)	Noise (μV_{rms})	Package Type
NCV4264D50R2G	AEC Qualified PPAP Capable Pb-free Halide free	Active	Single	Positive	5	0.1	45	0.275	0.1	67		SOIC-8

Application Diagram



For more information please contact your local sales support at www.onsemi.com

Created on: 7/11/2015