

Automotive 750 V, 950 A Single Side Direct Cooling 6-Pack Power Module

VE-Tract™ Direct Module

NVH950S75L4SPC

Product Description

The NVH950S75L4SPC is a power module from the VE-Trac™ Direct family of highly integrated power modules with industry standard footprints for Hybrid (HEV) and Electric Vehicle (EV) traction inverter application.

The module integrates six Field Stop 4 (FS4) 750 V Narrow Mesa IGBTs in a 6-pack configuration, which excels in providing high current density, while offering robust short circuit protection and increased blocking voltage. Additionally, FS4 750 V Narrow Mesa IGBTs show low power losses during lighter loads, which helps to improve overall system efficiency in automotive applications.

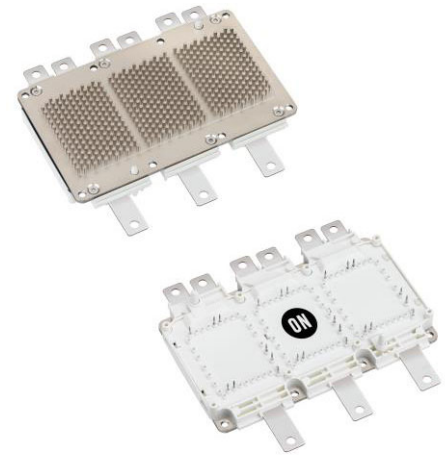
For assembly ease and reliability, a new generation of press-fit pins are integrated into the power module signal terminals. In addition, the power module has an optimized pin-fin heatsink in the baseplate and longer power terminals to easily integrate an external current sensor.

Features

- Direct Cooling w/ Integrated Pin-fin Heatsink
- Ultra-low Stray Inductance
- $T_{vjmax} = 175^{\circ}\text{C}$ Continuous Operation
- Low V_{CESAT} and Switching Losses
- Automotive Grade FS4 750 V Narrow Mesa IGBT
- Fast Recovery Diode Chip Technologies
- 4.2 kV Isolated DBC Substrate
- Easy to Integrate 6-pack Topology
- This Device is Pb-Free and is RoHS Compliant

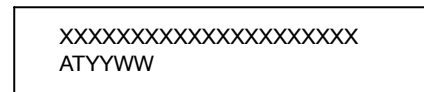
Typical Applications

- Hybrid and Electric Vehicle Traction Inverter
- High Power Converters

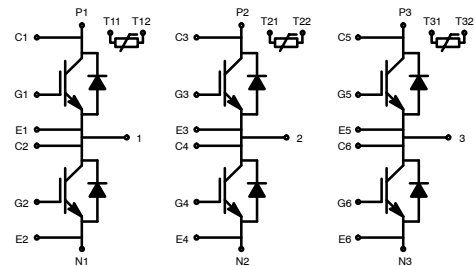


SSDC33, 154.50x92.0 (SPC)
CASE 183AC

MARKING DIAGRAM



- XXXXX = Specific Device Code
- AT = Assembly & Test Site Code
- YYWW = Year and Work Week Code



ORDERING INFORMATION

See detailed ordering and shipping information on page 5 of this data sheet.

NVH950S75L4SPC

Pin Description

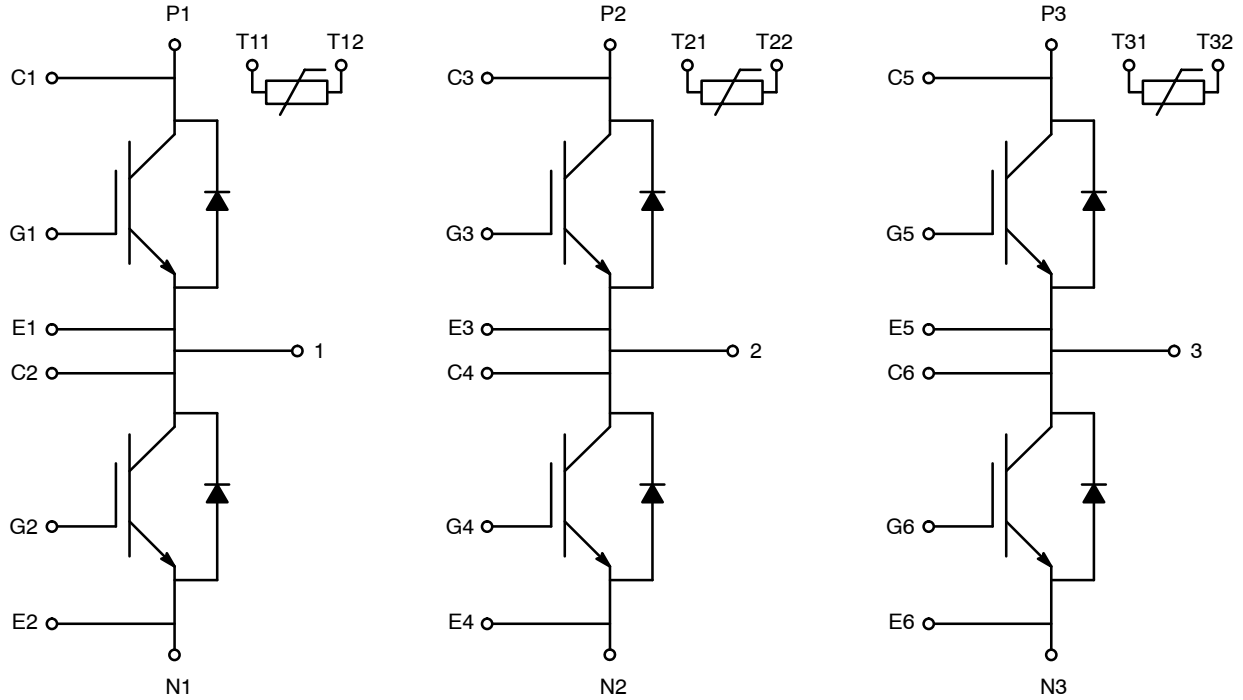


Figure 1. Pin Description

PIN FUNCTION DESCRIPTION

| Pin # | Pin Function Description |
|------------|-----------------------------------|
| P1, P2, P3 | Positive Power Terminals |
| N1, N2, N3 | Negative Power Terminals |
| 1 | Phase 1 Output |
| 2 | Phase 2 Output |
| 3 | Phase 3 Output |
| G1-G6 | IGBT Gate |
| E1-E6 | IGBT Gate Return |
| C1-C6 | Desat Detect/Collector Sense |
| T11, T12 | Phase 1 Temperature Sensor Output |
| T21, T22 | Phase 2 Temperature Sensor Output |
| T31, T32 | Phase 3 Temperature Sensor Output |

Materials

DBC Substrate: SiN isolated substrate, basic isolation,
and copper on both sides

Terminals: Copper + Tin electro-plating

Signal Leads: Copper + Tin plating

Pin-fin Base plate: Copper + Ni plating

Flammability Information

The module frame meets UL94V-0 flammability rating.

NVH950S75L4SPC

MODULE CHARACTERISTICS (T_{vj} = 25°C, Unless Otherwise Specified)

| Symbol | Parameter | Rating | Unit |
|--------------------|---|------------|------|
| T _{vj} | Operating Junction Temperature | -40 to 175 | °C |
| T _{STG} | Storage Temperature | -40 to 125 | °C |
| V _{ISO} | Isolation Voltage (DC, 0 Hz, 1 s) | 4200 | V |
| L _{sCE} | Stray Inductance | 8 | nH |
| RCC'+EE' | Module Lead Resistance, Terminals – Chip | 0.75 | mΩ |
| G | Module Weight | 700 | g |
| CTI | Comparative Tracking Index | >200 | - |
| d _{creep} | Creepage: Terminal to Heatsink Terminal to Terminal | 9.0 9.0 | mm |
| d _{clear} | Clearance: Terminal to Heatsink Terminal to Terminal | 4.5 4.5 | mm |

| Symbol | Parameters | Conditions | Min | Typ | Max | Unit |
|------------|---|--|--------|--------|------------|------|
| Δp | Pressure Drop in Cooling Circuit | 10 L/min, 65°C, 50/50 EGW | - | 95 | - | mbar |
| P (Note 1) | Maximum Pressure in Cooling Loop (relative) | T _{Baseplate} < 40°C T _{Baseplate} > 40°C | - - | - - | 2.5 2.0 | bar |

1. EPDM rubber 50 durometer 'O' ring used.

ABSOLUTE MAXIMUM RATINGS (T_{vj} = 25°C, Unless Otherwise Specified)

| Symbol | Parameter | Rating | Unit |
|--------|-----------|--------|------|
|--------|-----------|--------|------|

IGBT

| | | | |
|--------------------|--|--------------|---|
| V _{CES} | Collector to Emitter Voltage | 750 | V |
| V _{GES} | Gate to Emitter Voltage | ±20 | V |
| I _{CN} | Implemented Collector Current | 950 | A |
| I _{C nom} | Continuous DC Collector Current, T _{vj} = 175°C, T _F = 65°C, Ref. Heatsink | 750 (Note 2) | A |
| I _{CRM} | Pulsed Collector Current @ V _{GE} = 15 V, t _p = 1 mS | 1900 | A |
| P _{tot} | Total Power Dissipation T _{vj} = 175°C, T _F = 65°C, Ref. Heatsink | 1325 | W |

Diode

| | | | | |
|------------------------|---|--|----------------|------------------|
| V _{RRM} | Repetitive Peak Reverse Voltage | 750 | V | |
| I _{FN} | Implemented Forward Current | 950 | A | |
| I _F | Continuous Forward Current, T _{vj} = 175°C, T _F = 65°C, Ref. Heatsink | 500 (Note 2) | A | |
| I _{FRM} | Repetitive Peak Forward Current, t _p = 1 mS | 1900 | A | |
| I ² t value | Surge Current Capability, t _p = 10 mS, | T _{vj} = 150°C T _{vj} = 175°C | 19000 16000 | A ² s |

Stresses exceeding those listed in the Maximum Ratings table may damage the device. If any of these limits are exceeded, device functionality should not be assumed, damage may occur and reliability may be affected.

2. Verified by characterization/design, not by test.

NVH950S75L4SPC

CHARACTERISTICS OF IGBT ($T_{vj} = 25^{\circ}\text{C}$, Unless Otherwise Specified)

| Symbol | Parameters | Conditions | Min | Typ | Max | Unit | |
|-------------|--|---|---|-----|------|-----------|---------------|
| V_{CESAT} | Collector to Emitter Saturation Voltage (Terminal) | $V_{GE} = 15\text{ V}$, $I_C = 600\text{ A}$ | $T_{vj} = 25^{\circ}\text{C}$ | - | 1.30 | 1.55 | V |
| | Collector to Emitter Saturation Voltage (Chip) | $V_{GE} = 15\text{ V}$, $I_C = 600\text{ A}$ | $T_{vj} = 25^{\circ}\text{C}$ | - | 1.25 | 1.50 | |
| | | | $T_{vj} = 150^{\circ}\text{C}$ | - | 1.37 | - | |
| | | $V_{GE} = 15\text{ V}$, $I_C = 950\text{ A}$ | $T_{vj} = 25^{\circ}\text{C}$ | - | 1.47 | - | |
| | | | $T_{vj} = 150^{\circ}\text{C}$ | - | 1.71 | - | |
| | | | $T_{vj} = 175^{\circ}\text{C}$ | - | 1.77 | - | |
| I_{CES} | Collector to Emitter Leakage Current | $V_{GE} = 0$, $V_{CE} = 750\text{ V}$ | $T_{vj} = 25^{\circ}\text{C}$ | - | - | 500 | μA |
| | | | $T_{vj} = 150^{\circ}\text{C}$ | - | 2.0 | - | mA |
| I_{GES} | Gate – Emitter Leakage Current | $V_{CE} = 0$, $V_{GE} = \pm 20\text{ V}$ | | - | - | ± 300 | nA |
| V_{th} | Threshold Voltage | $V_{CE} = V_{GE}$, $I_C = 90\text{ mA}$ | | 4.8 | 5.7 | 6.6 | V |
| Q_G | Total Gate Charge | $V_{GE} = -8$ to 15 V , $V_{CE} = 400\text{ V}$ | | - | 2.3 | - | μC |
| R_{Gint} | Internal Gate Resistance | | | - | 1.7 | - | Ω |
| C_{ies} | Input Capacitance | $V_{CE} = 30\text{ V}$, $V_{GE} = 0\text{ V}$, $f = 100\text{ kHz}$ | | - | 60 | - | nF |
| C_{oes} | Output Capacitance | $V_{CE} = 30\text{ V}$, $V_{GE} = 0\text{ V}$, $f = 100\text{ kHz}$ | | - | 1.90 | - | nF |
| C_{res} | Reverse Transfer Capacitance | $V_{CE} = 30\text{ V}$, $V_{GE} = 0\text{ V}$, $f = 100\text{ kHz}$ | | - | 0.2 | - | nF |
| $T_{d,on}$ | Turn On Delay, Inductive Load | $I_C = 600\text{ A}$, $V_{CE} = 400\text{ V}$, $V_{GE} = +15/-8\text{ V}$, $R_{g,on} = 4\ \Omega$ | $T_{vj} = 25^{\circ}\text{C}$ | - | 315 | - | nS |
| | | | $T_{vj} = 150^{\circ}\text{C}$ | - | 320 | - | |
| | | | $T_{vj} = 175^{\circ}\text{C}$ | - | 322 | - | |
| T_r | Rise Time, Inductive Load | $I_C = 600\text{ A}$, $V_{CE} = 400\text{ V}$, $V_{GE} = +15/-8\text{ V}$, $R_{g,on} = 4\ \Omega$ | $T_{vj} = 25^{\circ}\text{C}$ | - | 108 | - | nS |
| | | | $T_{vj} = 150^{\circ}\text{C}$ | - | 127 | - | |
| | | | $T_{vj} = 175^{\circ}\text{C}$ | - | 132 | - | |
| $T_{d,off}$ | Turn Off Delay, Inductive Load | $I_C = 600\text{ A}$, $V_{CE} = 400\text{ V}$, $V_{GE} = +15/-8\text{ V}$, $R_{g,off} = 12\ \Omega$ | $T_{vj} = 25^{\circ}\text{C}$ | - | 1063 | - | nS |
| | | | $T_{vj} = 150^{\circ}\text{C}$ | - | 1196 | - | |
| | | | $T_{vj} = 175^{\circ}\text{C}$ | - | 1203 | - | |
| T_f | Fall Time, Inductive Load | $I_C = 600\text{ A}$, $V_{CE} = 400\text{ V}$, $V_{GE} = +15/-8\text{ V}$, $R_{g,off} = 12\ \Omega$ | $T_{vj} = 25^{\circ}\text{C}$ | - | 85 | - | nS |
| | | | $T_{vj} = 150^{\circ}\text{C}$ | - | 144 | - | |
| | | | $T_{vj} = 175^{\circ}\text{C}$ | - | 151 | - | |
| E_{ON} | Turn-On Switching Loss (Including Diode Reverse Recovery Loss) | $I_C = 600\text{ A}$, $V_{CE} = 400\text{ V}$, $V_{GE} = +15/-8\text{ V}$, $L_s = 22\text{ nH}$, $R_{g,on} = 4\ \Omega$ | $di/dt = 4.6\text{ A/nS}$, $T_{vj} = 25^{\circ}\text{C}$ | - | 26 | - | mJ |
| | | | $di/dt = 3.9\text{ A/nS}$, $T_{vj} = 150^{\circ}\text{C}$ | - | 36 | - | |
| | | | $di/dt = 3.6\text{ A/nS}$, $T_{vj} = 175^{\circ}\text{C}$ | - | 38 | - | |
| E_{OFF} | Turn-Off Switching Loss | $I_C = 600\text{ A}$, $V_{CE} = 400\text{ V}$, $V_{GE} = +15/-8\text{ V}$, $L_s = 22\text{ nH}$, $R_{g,off} = 12\ \Omega$ | $dv/dt = 2.7\text{ V/nS}$, $T_{vj} = 25^{\circ}\text{C}$ | - | 33 | - | mJ |
| | | | $dv/dt = 1.9\text{ V/nS}$, $T_{vj} = 150^{\circ}\text{C}$ | - | 46 | - | |
| | | | $dv/dt = 1.9\text{ V/nS}$, $T_{vj} = 175^{\circ}\text{C}$ | - | 50 | - | |
| E_{SC} | Minimum Short Circuit Energy Withstand | $V_{GE} = 15\text{ V}$, $V_{CC} = 400\text{ V}$ | $T_{vj} = 25^{\circ}\text{C}$ | 9 | - | - | J |
| | | | $T_{vj} = 175^{\circ}\text{C}$ | 4.5 | - | - | |

NVH950S75L4SPC

CHARACTERISTICS OF INVERSE DIODE ($T_{vj} = 25^{\circ}\text{C}$, Unless Otherwise Specified)

| Symbol | Parameters | Conditions | Min | Typ | Max | Unit | |
|----------|----------------------------------|---|---|-----|------|------|---------------|
| V_F | Diode Forward Voltage (Terminal) | $I_F = 600\text{ A}$ | $T_{vj} = 25^{\circ}\text{C}$ | - | 1.70 | 1.95 | V |
| | Diode Forward Voltage (Chip) | $I_F = 600\text{ A}$ | $T_{vj} = 25^{\circ}\text{C}$ | - | 1.60 | 1.85 | |
| | | | $T_{vj} = 150^{\circ}\text{C}$ | - | 1.55 | - | |
| | | $I_F = 950\text{ A}$ | $T_{vj} = 25^{\circ}\text{C}$ | - | 1.73 | - | |
| | | | $T_{vj} = 150^{\circ}\text{C}$ | - | 1.75 | - | |
| | | | $T_{vj} = 175^{\circ}\text{C}$ | - | 1.74 | - | |
| E_{rr} | Reverse Recovery Energy | $I_F = 600\text{ A}$, $V_R = 400\text{ V}$, $V_{GE} = -8\text{ V}$, $R_{g.on} = 4\ \Omega$ | $di/dt = 3.5\text{ A/nS}$, $T_{vj} = 25^{\circ}\text{C}$ | - | 3 | - | mJ |
| | | | $di/dt = 3.0\text{ A/nS}$, $T_{vj} = 150^{\circ}\text{C}$ | - | 9 | - | |
| | | | $di/dt = 2.9\text{ A/nS}$, $T_{vj} = 175^{\circ}\text{C}$ | - | 11 | - | |
| Q_{RR} | Recovered Charge | $I_F = 600\text{ A}$, $V_R = 400\text{ V}$, $V_{GE} = -8\text{ V}$, $R_{g.on} = 4\ \Omega$ | $di/dt = 3.5\text{ A/nS}$, $T_{vj} = 25^{\circ}\text{C}$ | - | 9 | - | μC |
| | | | $di/dt = 3.0\text{ A/nS}$, $T_{vj} = 150^{\circ}\text{C}$ | - | 32 | - | |
| | | | $di/dt = 2.9\text{ A/nS}$, $T_{vj} = 175^{\circ}\text{C}$ | - | 39 | - | |
| I_{rr} | Peak Reverse Recovery Current | $I_F = 600\text{ A}$, $V_R = 400\text{ V}$, $V_{GE} = -8\text{ V}$, $R_{g.on} = 4\ \Omega$ | $di/dt = 3.5\text{ A/nS}$, $T_{vj} = 25^{\circ}\text{C}$ | - | 133 | - | A |
| | | | $di/dt = 3.0\text{ A/nS}$, $T_{vj} = 150^{\circ}\text{C}$ | - | 246 | - | |
| | | | $di/dt = 2.9\text{ A/nS}$, $T_{vj} = 175^{\circ}\text{C}$ | - | 282 | - | |

NTC SENSOR CHARACTERISTICS ($T_{vj} = 25^{\circ}\text{C}$, Unless Otherwise Specified)

| Symbol | Parameters | Conditions | Min | Typ | Max | Unit |
|----------------------|-------------------|---|-----|------|-----|------------------|
| R_{25} (Note 3) | Rated Resistance | $T_C = 25^{\circ}\text{C}$ | - | 5 | - | $\text{k}\Omega$ |
| $\Delta R/R$ | Deviation of R100 | $T_C = 100^{\circ}\text{C}$, $R_{100} = 493\ \Omega$ | 5 | - | 5 | % |
| P_{25} | Power Dissipation | $T_C = 25^{\circ}\text{C}$ | - | - | 20 | mW |
| $B_{25/50}$ | B-Value | $R = R_{25} \exp [B_{25/50} (1/T - 1/298)]$ | - | 3375 | - | K |
| $B_{25/80}$ | B-Value | $R = R_{25} \exp [B_{25/80} (1/T - 1/298)]$ | - | 3360 | - | K |
| $B_{25/100}$ | B-Value | $R = R_{25} \exp [B_{25/100} (1/T - 1/298)]$ | - | 3364 | - | K |

THERMAL CHARACTERISTICS

| Symbol | Parameter | Min | Typ | Max | Unit |
|---------------------|--|-----|-------|------|----------------------|
| IGBT. $R_{th,J-F}$ | R_{th} , Junction to Fluid, 10 L/min, 65°C , 50/50 EGW | - | 0.083 | 0.10 | $^{\circ}\text{C/W}$ |
| Diode. $R_{th,J-F}$ | R_{th} , Junction to Fluid, 10 L/min, 65°C , 50/50 EGW | - | 0.134 | 0.16 | $^{\circ}\text{C/W}$ |

ORDERING INFORMATION

| Part Number | Package | Shipping |
|----------------|--|----------------|
| NVH950S75L4SPC | SSDC33, 154.50x92.0 (SPC) (Pb-Free) | 4 Units / Tray |

NVH950S75L4SPC

TYPICAL CHARACTERISTICS

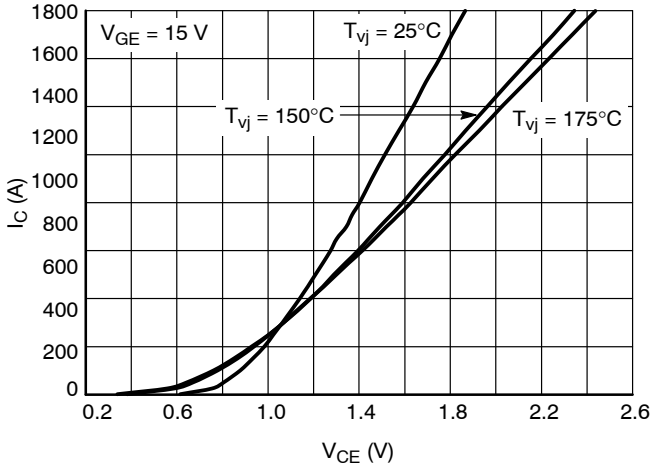


Figure 2. IGBT Output Characteristic

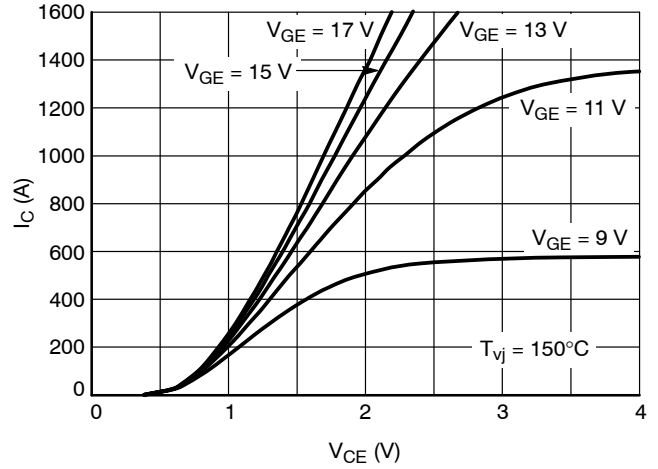


Figure 3. IGBT Output Characteristic

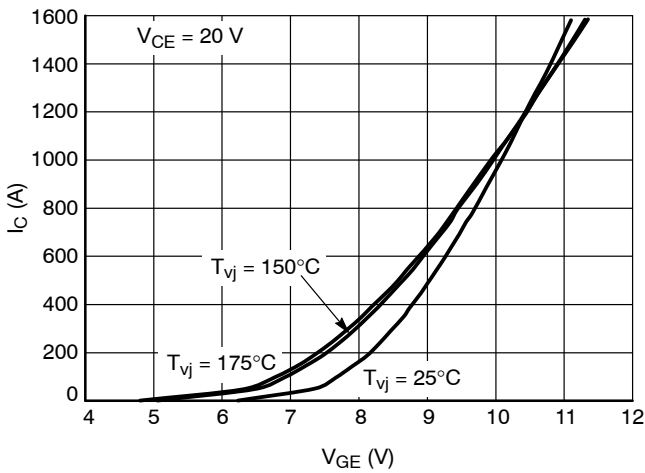


Figure 4. IGBT Transfer Characteristic

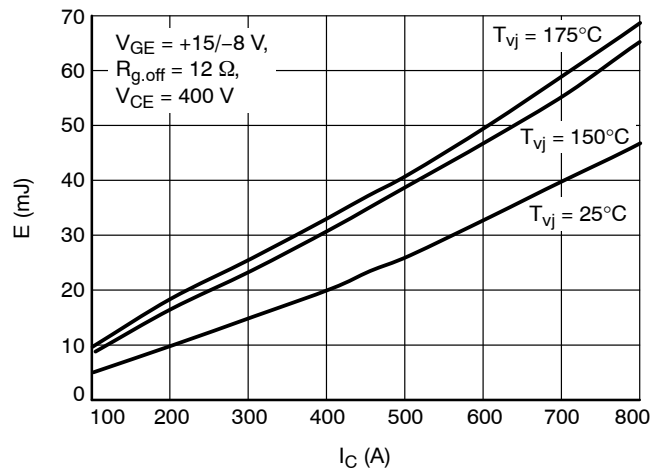


Figure 5. IGBT Turn-off Losses vs. I_C

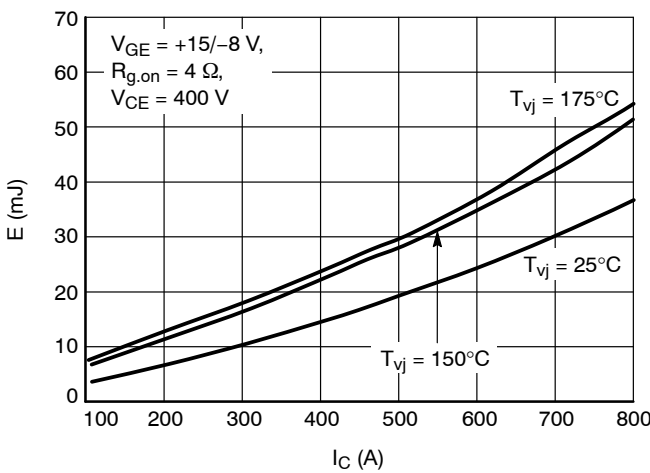


Figure 6. IGBT Turn-on Losses vs. I_C

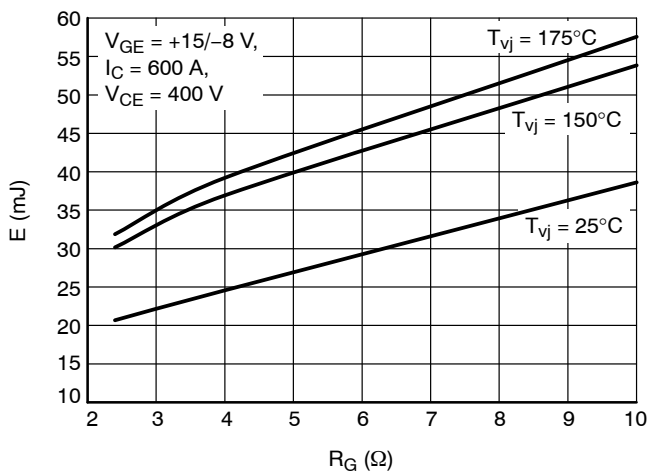


Figure 7. E_{ON} vs. R_G

NVH950S75L4SPC

TYPICAL CHARACTERISTICS

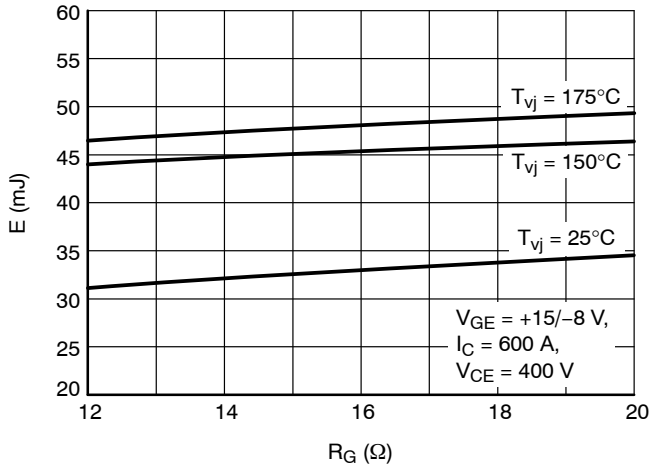


Figure 8. E_{OFF} vs. R_G

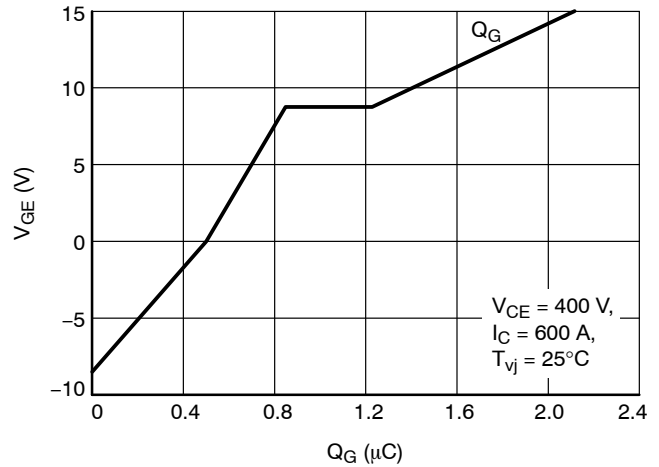


Figure 9. Gate Charge Characteristic

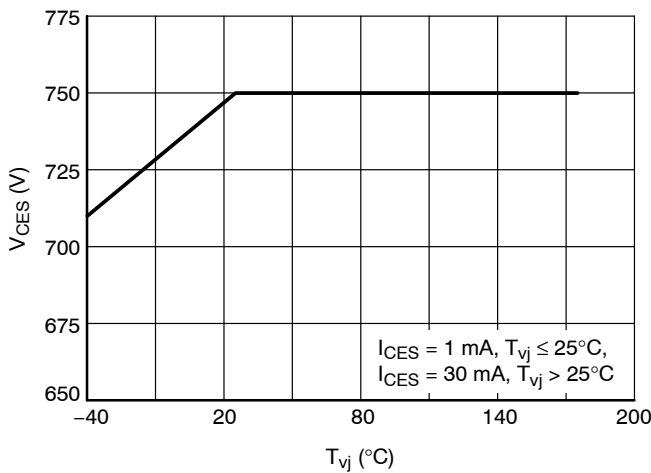


Figure 10. Maximum Allowed V_{CE}

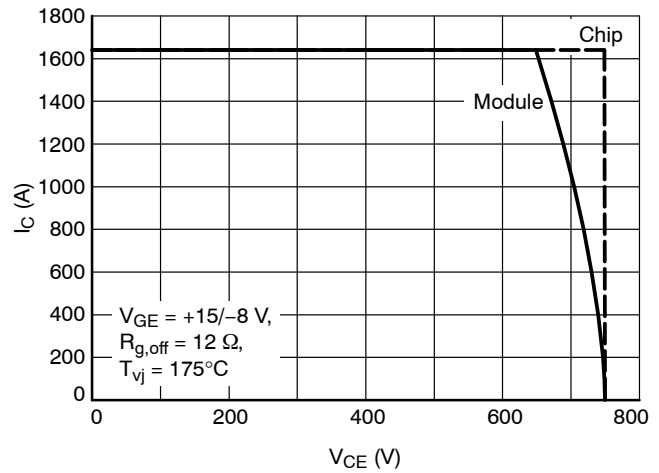


Figure 11. Reverse Bias Safe Operating Area

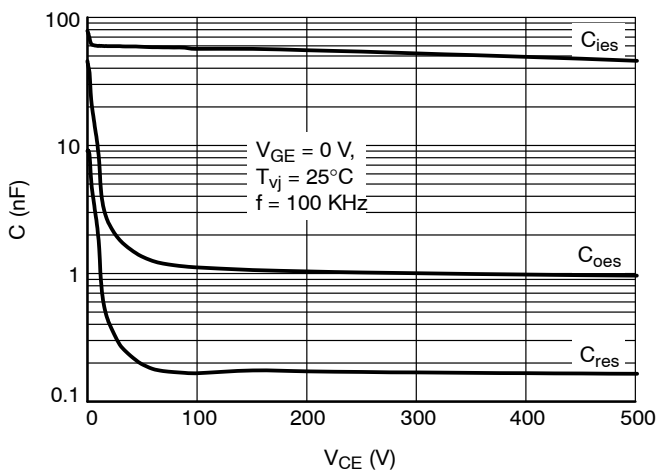


Figure 12. Capacitance Characteristic

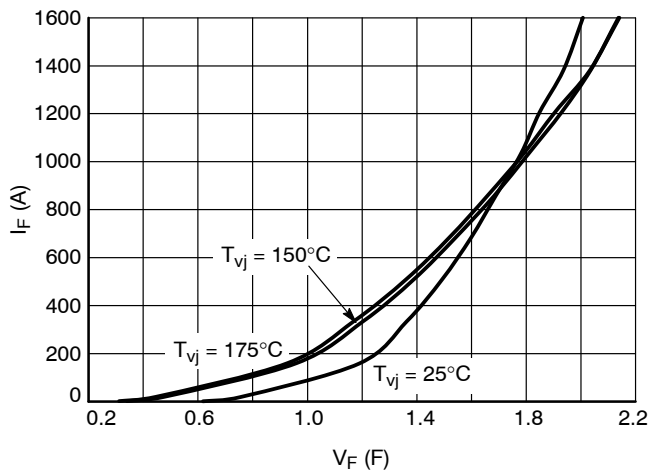


Figure 13. Diode Forward Characteristic

NVH950S75L4SPC

TYPICAL CHARACTERISTICS

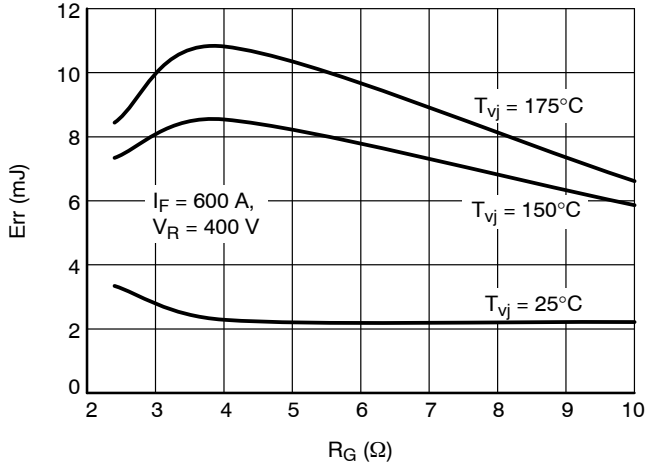


Figure 14. Diode Switching Losses vs. R_G

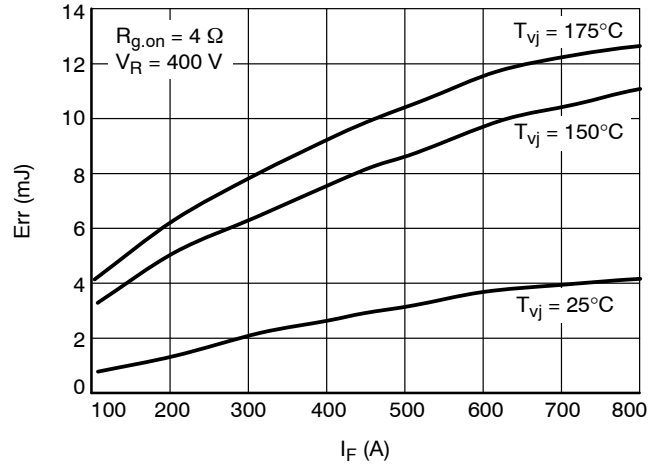


Figure 15. Diode Switching Losses vs. I_F

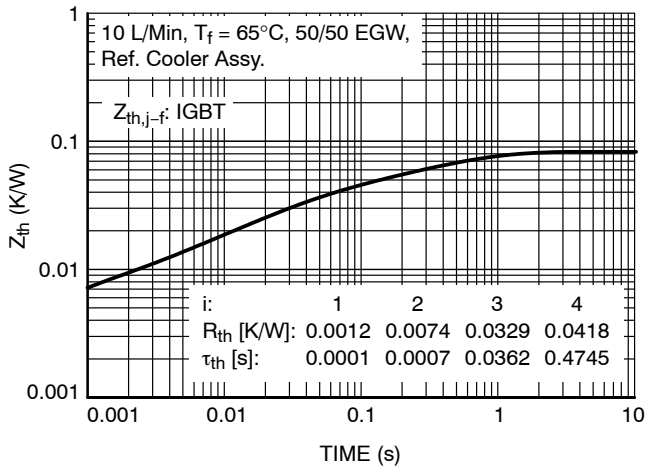


Figure 16. IGBT Transient Thermal Impedance (Typ.)

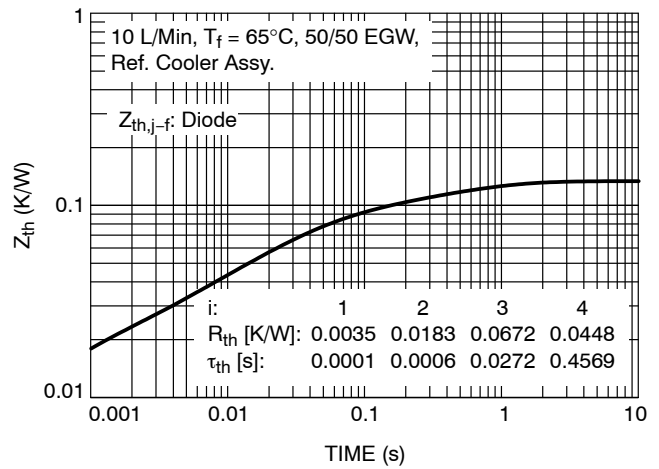


Figure 17. Diode Transient Thermal Impedance (Typ.)

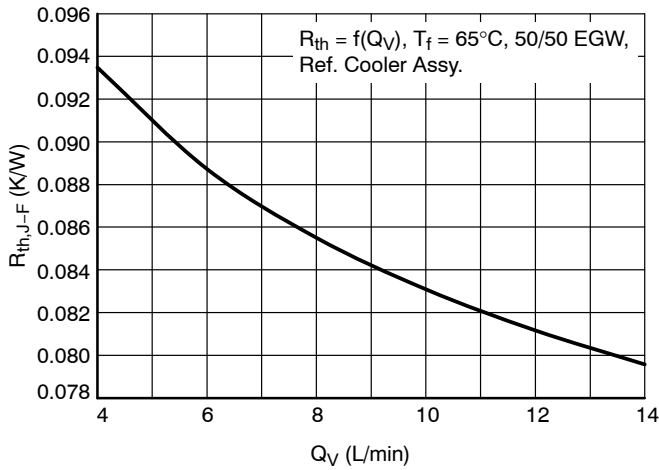


Figure 18. IGBT, Thermal Resistance (Typ.)

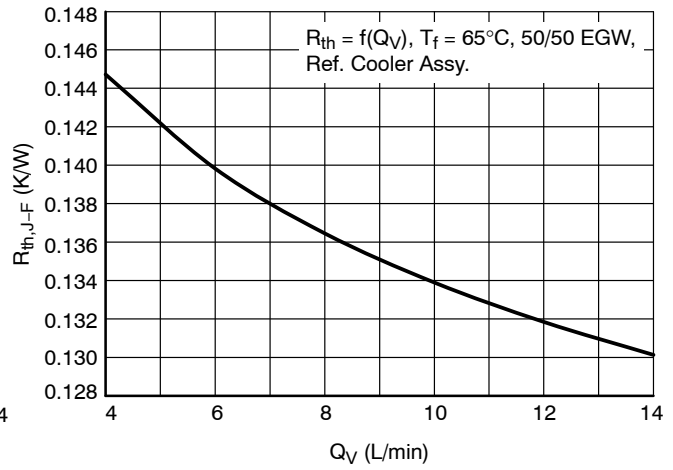


Figure 19. Diode, Thermal Resistance (Typ.)

NVH950S75L4SPC

TYPICAL CHARACTERISTICS

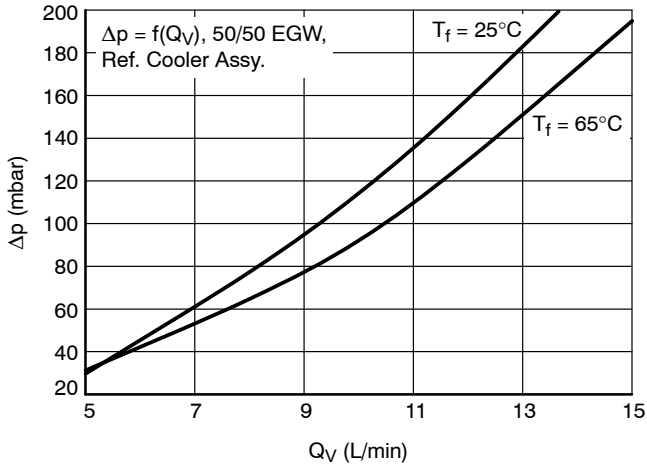


Figure 20. Pressure Drop in Cooling Circuit

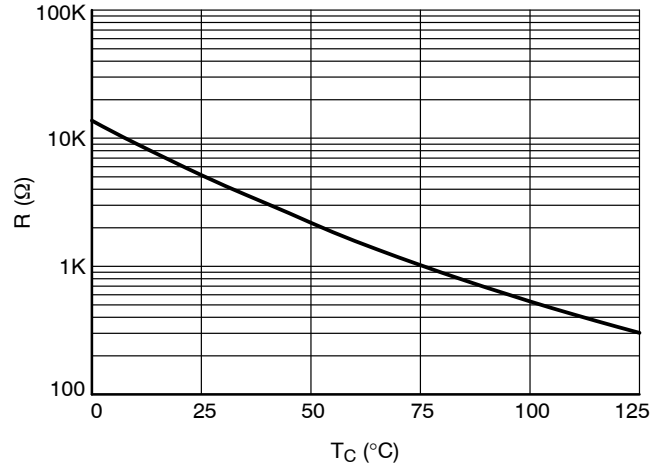
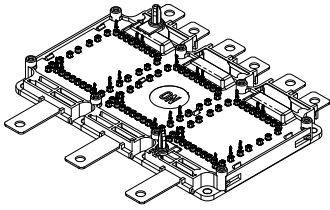


Figure 21. NTC Thermistor - Temperature Characteristic (Typical)

MECHANICAL CASE OUTLINE

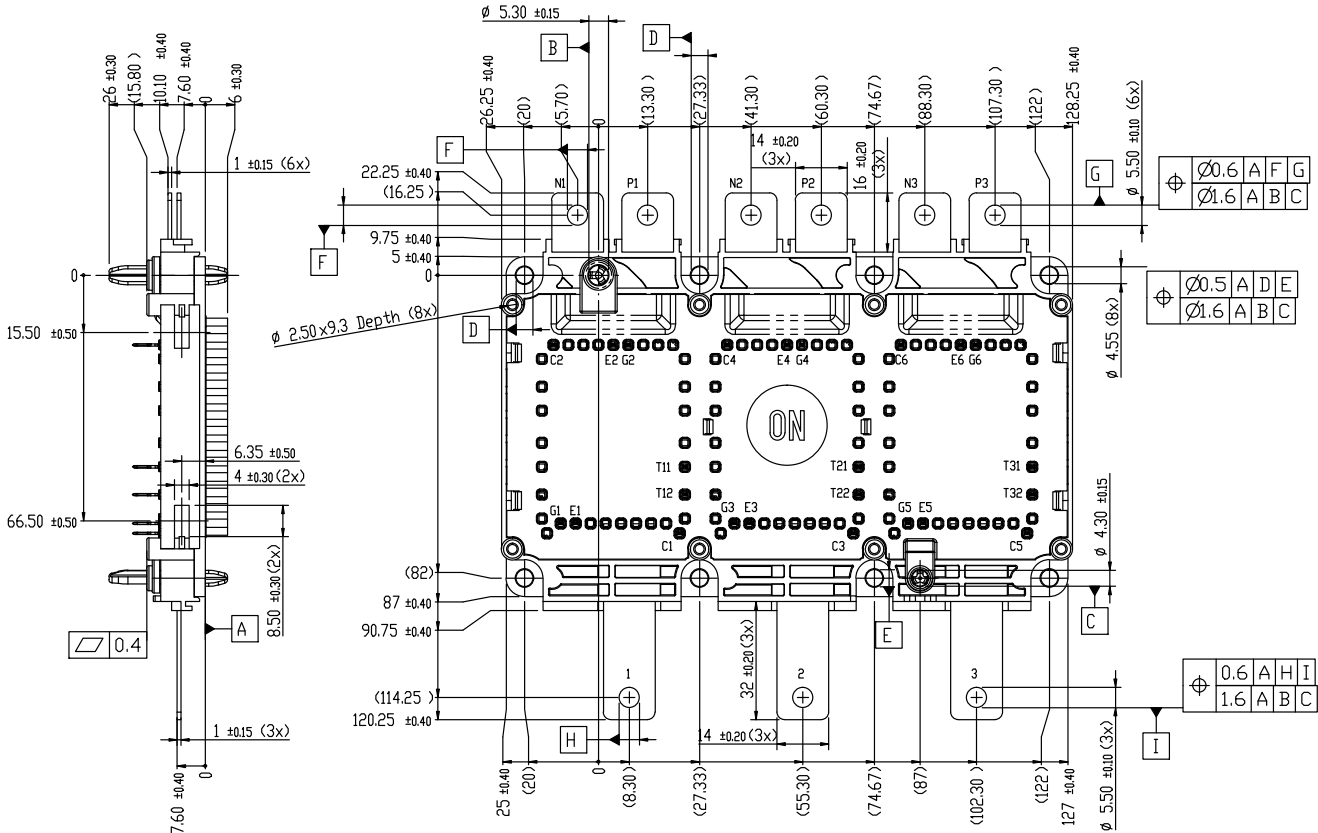
PACKAGE DIMENSIONS

ON Semiconductor®

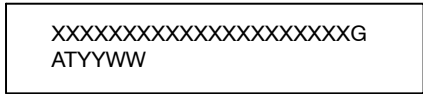


SSDC33, 154.50x92.0 (SPC)
CASE 183AC
ISSUE A

DATE 11 DEC 2019



GENERIC MARKING DIAGRAM*



XXXXX = Specific Device Code
 G = Pb-Free Package
 AT = Assembly & Test Site Code
 YYWW = Year and Work Week Code

*This information is generic. Please refer to device data sheet for actual part marking. Pb-Free indicator, "G" or microdot "•", may or may not be present. Some products may not follow the Generic Marking.

| | | |
|-------------------------|----------------------------------|--|
| DOCUMENT NUMBER: | 98AON10437H | Electronic versions are uncontrolled except when accessed directly from the Document Repository. Printed versions are uncontrolled except when stamped "CONTROLLED COPY" in red. |
| DESCRIPTION: | SSDC33, 154.50x92.0 (SPC) | PAGE 1 OF 2 |

ON Semiconductor and are trademarks of Semiconductor Components Industries, LLC dba ON Semiconductor or its subsidiaries in the United States and/or other countries. ON Semiconductor reserves the right to make changes without further notice to any products herein. ON Semiconductor makes no warranty, representation or guarantee regarding the suitability of its products for any particular purpose, nor does ON Semiconductor assume any liability arising out of the application or use of any product or circuit, and specifically disclaims any and all liability, including without limitation special, consequential or incidental damages. ON Semiconductor does not convey any license under its patent rights nor the rights of others.

MECHANICAL CASE OUTLINE

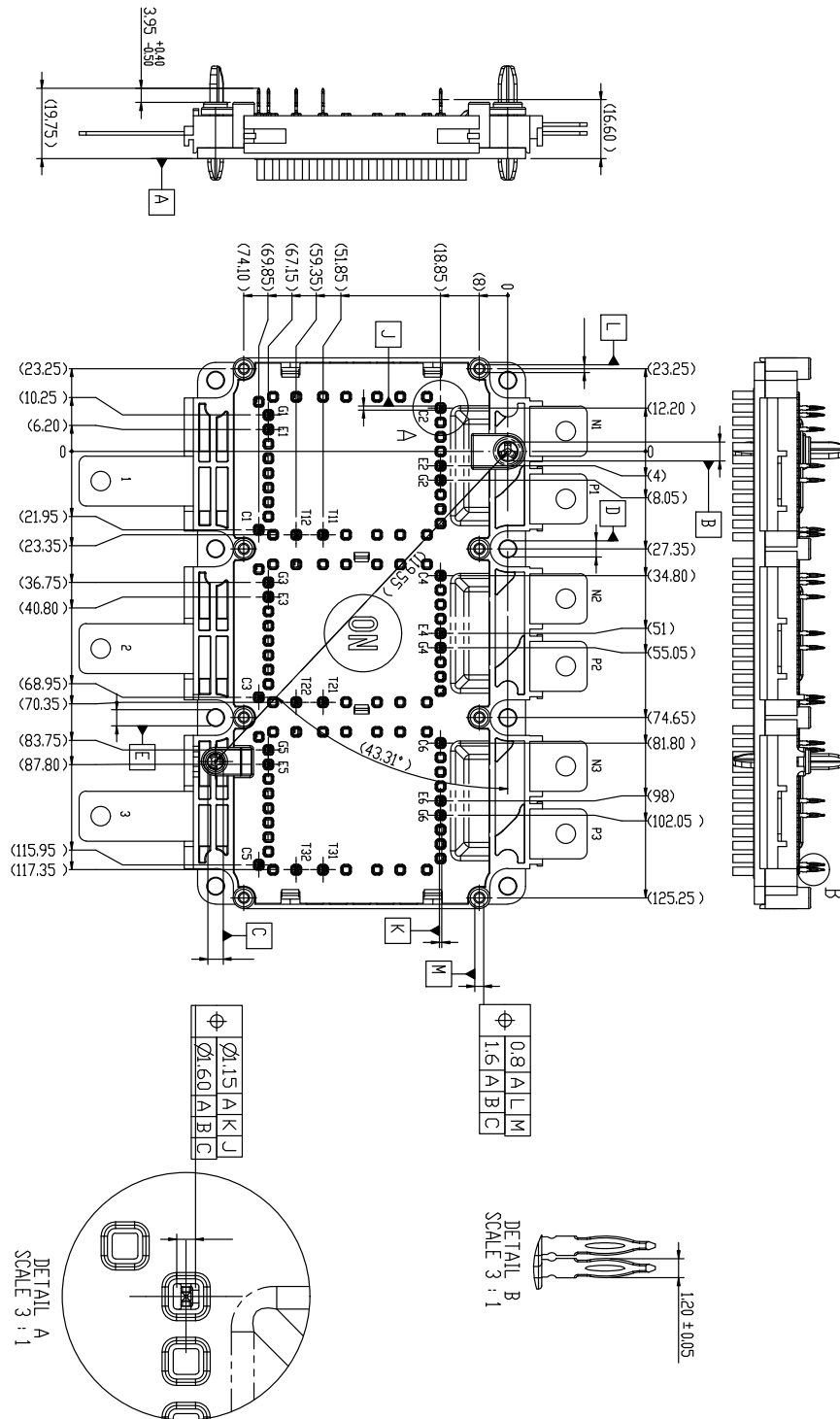
PACKAGE DIMENSIONS

ON Semiconductor®



SSDC33, 154.50x92.0 (SPC)
CASE 183AC
ISSUE A

DATE 11 DEC 2019



| | | |
|-------------------------|----------------------------------|---|
| DOCUMENT NUMBER: | 98AON10437H | Electronic versions are uncontrolled except when accessed directly from the Document Repository. Printed versions are uncontrolled except when stamped "CONTROLLED COPY" in red. |
| DESCRIPTION: | SSDC33, 154.50x92.0 (SPC) | PAGE 2 OF 2 |

ON Semiconductor and are trademarks of Semiconductor Components Industries, LLC dba ON Semiconductor or its subsidiaries in the United States and/or other countries. ON Semiconductor reserves the right to make changes without further notice to any products herein. ON Semiconductor makes no warranty, representation or guarantee regarding the suitability of its products for any particular purpose, nor does ON Semiconductor assume any liability arising out of the application or use of any product or circuit, and specifically disclaims any and all liability, including without limitation special, consequential or incidental damages. ON Semiconductor does not convey any license under its patent rights nor the rights of others.

onsemi, **Onsemi**, and other names, marks, and brands are registered and/or common law trademarks of Semiconductor Components Industries, LLC dba "**onsemi**" or its affiliates and/or subsidiaries in the United States and/or other countries. **onsemi** owns the rights to a number of patents, trademarks, copyrights, trade secrets, and other intellectual property. A listing of **onsemi**'s product/patent coverage may be accessed at www.onsemi.com/site/pdf/Patent-Marking.pdf. **onsemi** reserves the right to make changes at any time to any products or information herein, without notice. The information herein is provided "as-is" and **onsemi** makes no warranty, representation or guarantee regarding the accuracy of the information, product features, availability, functionality, or suitability of its products for any particular purpose, nor does **onsemi** assume any liability arising out of the application or use of any product or circuit, and specifically disclaims any and all liability, including without limitation special, consequential or incidental damages. Buyer is responsible for its products and applications using **onsemi** products, including compliance with all laws, regulations and safety requirements or standards, regardless of any support or applications information provided by **onsemi**. "Typical" parameters which may be provided in **onsemi** data sheets and/or specifications can and do vary in different applications and actual performance may vary over time. All operating parameters, including "Typicals" must be validated for each customer application by customer's technical experts. **onsemi** does not convey any license under any of its intellectual property rights nor the rights of others. **onsemi** products are not designed, intended, or authorized for use as a critical component in life support systems or any FDA Class 3 medical devices or medical devices with a same or similar classification in a foreign jurisdiction or any devices intended for implantation in the human body. Should Buyer purchase or use **onsemi** products for any such unintended or unauthorized application, Buyer shall indemnify and hold **onsemi** and its officers, employees, subsidiaries, affiliates, and distributors harmless against all claims, costs, damages, and expenses, and reasonable attorney fees arising out of, directly or indirectly, any claim of personal injury or death associated with such unintended or unauthorized use, even if such claim alleges that **onsemi** was negligent regarding the design or manufacture of the part. **onsemi** is an Equal Opportunity/Affirmative Action Employer. This literature is subject to all applicable copyright laws and is not for resale in any manner.

ADDITIONAL INFORMATION

TECHNICAL PUBLICATIONS:

Technical Library: www.onsemi.com/design/resources/technical-documentation
onsemi Website: www.onsemi.com

ONLINE SUPPORT: www.onsemi.com/support

For additional information, please contact your local Sales Representative at www.onsemi.com/support/sales